

CERTIFICATE OF LOCATION OF GOVERNMENT CORNER

11 MEANDER Corner of Section 13, Township 107 N, Range 40 W, 5th P.M.

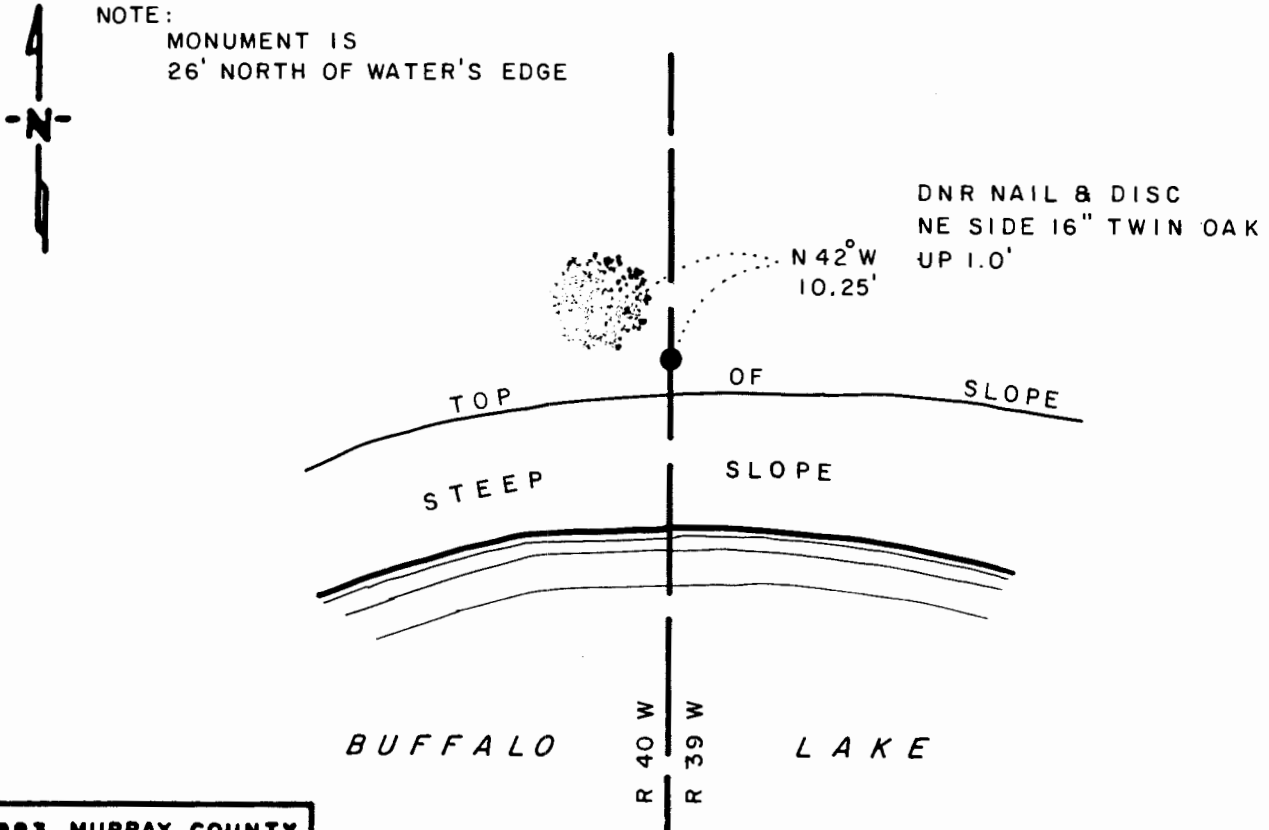
STATE OF MINNESOTA, County of MURRAY

At the corner location shown on the sketch

- On _____ found a _____
DATE
- left monument as found, lowered monument, removed monument (explain)
- On 7-23-91 placed a 3/4" x 24" REBAR WITH ALUMINUM CAP STAMPED
DATE "DNR SURVEY MARKER", UP 0.20'

SKETCH OF REFERENCE TIES

NOTE:
 MONUMENT IS
 26' NORTH OF WATER'S EDGE



1983 MURRAY COUNTY
 COORDINATE SYSTEM
 N = 184,463.306
 E = 548,361.892

BEARING OBSERVED WITH COMPASS

Statement of evidence relative to this corner location is on back of page

J.B.M. 7-31-91
 WAS 01346

I hereby certify that this document and the data contained herein was prepared by me or under my direct supervision.

Bruce W. Shupert 8-12-91
SIGNATURE DATE

Registration No. 17003
 Land Surveyor, Professional Engineer
 County Surveyor, County Engineer

OFFICE OF THE COUNTY RECORDER
 County of MURRAY

I hereby certify that this document was filed in the Co. Recorders office at _____ M. on the _____ day of AUG 15 1991 A.D., 19 _____

County Recorder James V. Johnson
 By _____, Deputy

DOCUMENT NO. _____

Meander Corner #11 of Section 13, Township 107 North, Range 40 West

The DNR Bureau of Engineering contacted the following for survey information:

Secretary of State's Office
Murray County Recorder's Office and Highway Engineer's Office
Chicago and North Western Railway Office in St. Paul

- 1861 U.S. General Land Office notes obtained from the Secretary of State's Office show the corner marked with a wood post with the following bearing trees marked:
15" White Ash, South 80° West, 19 links (12.54 feet)
10" B. Oak, North 60° East, 61 links (40.26 feet)
- 1907 Surveyor's Record Book A, page 205, obtained from the County Recorder's Office contains a survey by J. W. Woolstencraft. Survey shows a lake in the northwest quarter of Section 18 but does not show corner.
- 1985 July, The DNR Bureau of Engineering searched in area of corner for occupation lines and GLO bearing trees but were unable to find any evidence of corner.
- 1991 May, The DNR Bureau of Engineering searched again in area of corner for occupation lines and GLO bearing trees but were unable to find any evidence of corner. Computed the lost position for corner and found it to be:
105.55 ft. (105.60' GLO) from the northeast corner of Section 13
2533.31 ft. (2534.40' GLO) from the east quarter corner of Section 13

Analysis of the above information led the DNR Bureau of Engineering to conclude that the computed lost position marks the location of the corner.